

WESFARMERS LANDMARK
REAL ESTATE SIGNAGE

FROM

DESIGN RENAISSANCE PTY LTD

16 SIMPER CRESCENT
MOUNT BARKER
SOUTH AUSTRALIA
5251

PHONE 8391 0977

FAX 83913127

MOBILE 0417 397 987

EMAIL: connect@designrenaissance.com.au

WEB SITE: www.designrenaissance.com.au

INTRODUCTION:

The prime objective of Design Renaissance is to service the real estate industry.

We have been providing that service very successfully to hundreds of real estate agencies for around ten years, and we are here to stay.

We have a huge service range covering metropolitan Adelaide and near country areas on a daily basis and we service anywhere in Australia. We believe our turnaround production times & service range is the best in S.A.

Design Renaissance has invested heavily in the latest digital technology which enables us to supply you with the highest quality rented real estate signs available today. We take pride in the quality of the product we supply reliably and consistently, and our aim is to fulfill your requirements in a way that gives you a complete sense of confidence.

This document is a supplement to the information supplied as PDF files on the Main Real Estate web site page.

This information specifically shows examples of Weston Raine & Horne Real Estate signage and gives a visual guide to relative sizes.

These sign layouts are examples only and the variations possible are endless. When layout is determined we are guided by the content you supply, your suggestions and the suggestions of your clients.

Any of the signs shown here can be produced and installed or packaged for you to install anywhere in Australia.

You need to be aware that these are examples of standard signage we rent to Weston Raine & Horne Real Estate agencies. We can also produce individually designed signage for outright purchase by agencies or developers.

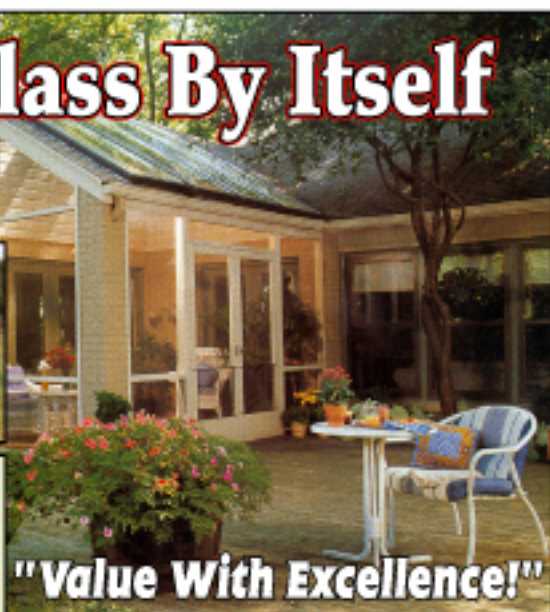
If you wish to rent bigger signage from us other than that which is illustrated here you need to be aware that we can join the larger signs together to create much bigger signage solutions.

We are an innovative and progressive business and we are always interested in becoming involved with new clients and different challenges. We are keen to negotiate ways that we can work with you and meet your particular needs.

To discuss any of the signage shown on the following pages or other ideas that you may have please call us on 8391 0977

FOR SALE

In A Class By Itself



This print shows an example of a Design Renaissance full digital printout sign which we can install with our high quality steel framing on your property to assist with its sale. Any combination of text and images is possible. Our signage is excellent value for your advertising dollar.

Call **SALESPERSON 8888 888 888**
www.theirdomain.com.au



Wesfarmers

LANDMARK

8888 8888

YOUR OFFICE & ADDRESS

FOR SALE

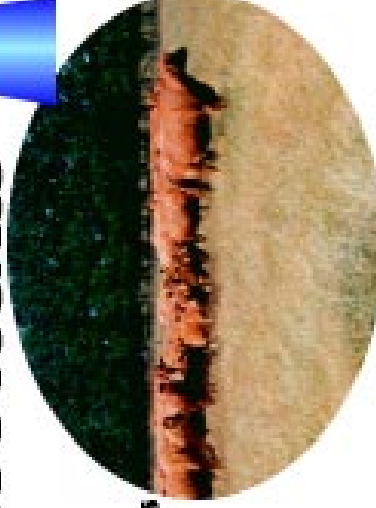
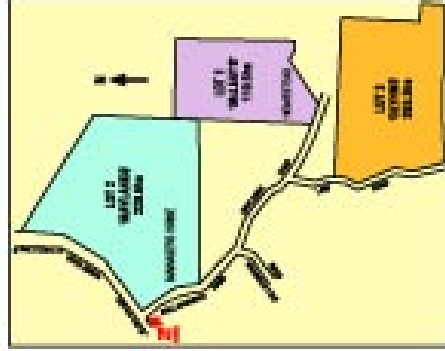
'MAYLANDS'

BLUE
RIBBON
OFFERING



594.4Ha PARAWA 1468Acs

- SA's leader in Prime Lamb production
- 2 family homes
- Flock / Cattle Care accreditation
- Outstanding pastures and improvements
- Quality infrastructure
- 1st class management practices
- 18 year rainfall average - 37.65"
- Creeks and natural springs, 45 dams
- Excellent fertiliser history
- Excellent balance of fertile soils



Call THE SALESPERSON 8888 8888 OR THAT SALESPERSON 8888 8888 8888



Wesfarmers

8888 8888

YOUR OFFICE

YOUR OFFICE STREET ADDRESS

L A N D M A R K

8X12 SIGN 2400mm High X 3600mm Wide

These signs can be
joined together to
create bigger signs



AUCTION
THURSDAY 20th DECEMBER at 11.00am
 MOUNT COMPASS FOOTBALL CLUBROOMS

CURRENCY CREEK
 INVESTOR / DEVELOPER / RURAL HOLDING

171 HA - 422 ACRES







Wesfarmers

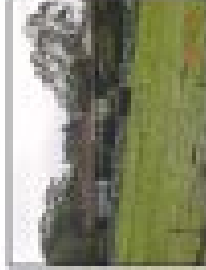
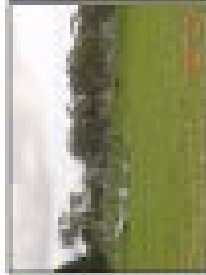
LANDMARK
8888 8888
YOUR OFFICE AND STREET ADDRESS

Rolling hills and fertile flats with great Currency Creek on two boundaries.
 Excellent views to Coobee Lake, Mt Robinson and across South Lulley.
 Proposed zone of land division has been formally undertaken and subject to
 completion with certain conditions needs deposit at the L.L.O.
INSPECTION STRICTLY BY APPOINTMENT WITH YOUR SELLING AGENTS
Call YOUR AGENT on 8536 0082 or 0427 712 323

8X8 SIGN 2400mm High X 2400mm Wide

FOR SALE

"PINE GAP" PICTURESQUE HILLS GRAZING IN ASHBOURNE



336 HECTARES - 830 ACRES

Larger area with 1 bedroom double brick house with extensive front area and having commanding district and distant views. Contains including large atrium / Impressive shed with both sheep and cattle yards, hayrack and trellis shed, heated 9 room paddock accessed via 14 stans. 'Pine Gap' is located within the renowned Ashbourne area. Recognized for its ability to produce quality livestock.

FOR MORE DETAILS AND VISITATIONS, VISIT OUR WEBSITE

Call THE SALESPERSON

8888 888 888



Wesfarmers

8888 888 888

YOUR OFFICE

YOUR OFFICE STREET ADDRESS

L A N D M A R K



6X8 SIGN 1840mm High X 2400mm Wide

FOR SALE

KIRIWINA

PRESTIGE ADELAIDE HILLS PROPERTY
Pastorale, Productive, Lifestyle
55.4 Ha - 137 Acres

SEC 31
55.4 HA

Wesfarmers
LANDMARK
8888 8888
YOUR OFFICE AND STREET ADDRESS

6X4 SIGN
1900mm High X 1260mm Wide



FOR SALE

DECEPTIVELY SPACIOUS MODERN BRICK VENEER HOME

Call THE AGENT
0407 712 523 HOME 8892 2130

Wesfarmers
LANDMARK
8888 8888
YOUR OFFICE
YOUR STREET ADDRESS

4X3 FRAMED SIGN
1260mm High X 980mm Wide

FOR SALE

BLUESTONE HOME EXCELLENT POSITION

- Three good size bedrooms
- Lounge & separate dining room
- Kitchen - wood & electric
- Beautiful timber mantels
- Outdoor mosaic areas
- Lovely garden

Call The Salesperson 8888 888 888

Wesfarmers
LANDMARK
8888 8888
YOUR OFFICE
YOUR STREET ADDRESS

4X3 REAR FRAMED SIGN
1200mm High X 920mm Wide

FOR SALE

DELICIOUS SPACIOUS FAMILY HOME

- 3 + 1 bedrooms w/ great views
- Kitchen with granite benches
- Huge brick ramp
- Great air conditioning
- Top bathroom & linen closet
- Spacious outdoor mosaic area
- No garden water pump
- Covered driveway, excellent park

Call THE SALES PERSON 8888 888 888

Wesfarmers
LANDMARK
8888 8888
YOUR OFFICE
YOUR STREET ADDRESS

2X3 FRAMED SIGN
920mm High X 600mm Wide